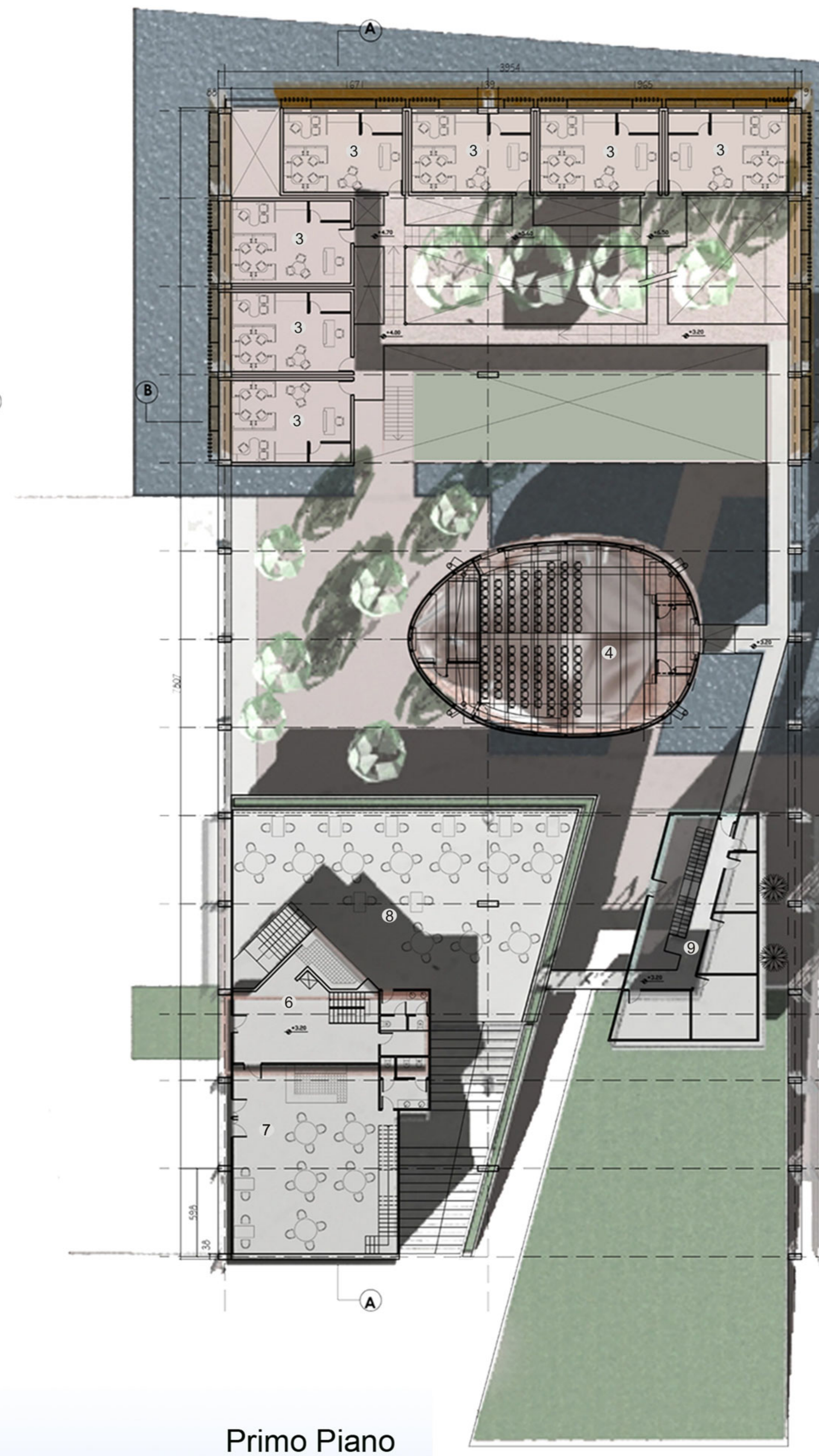
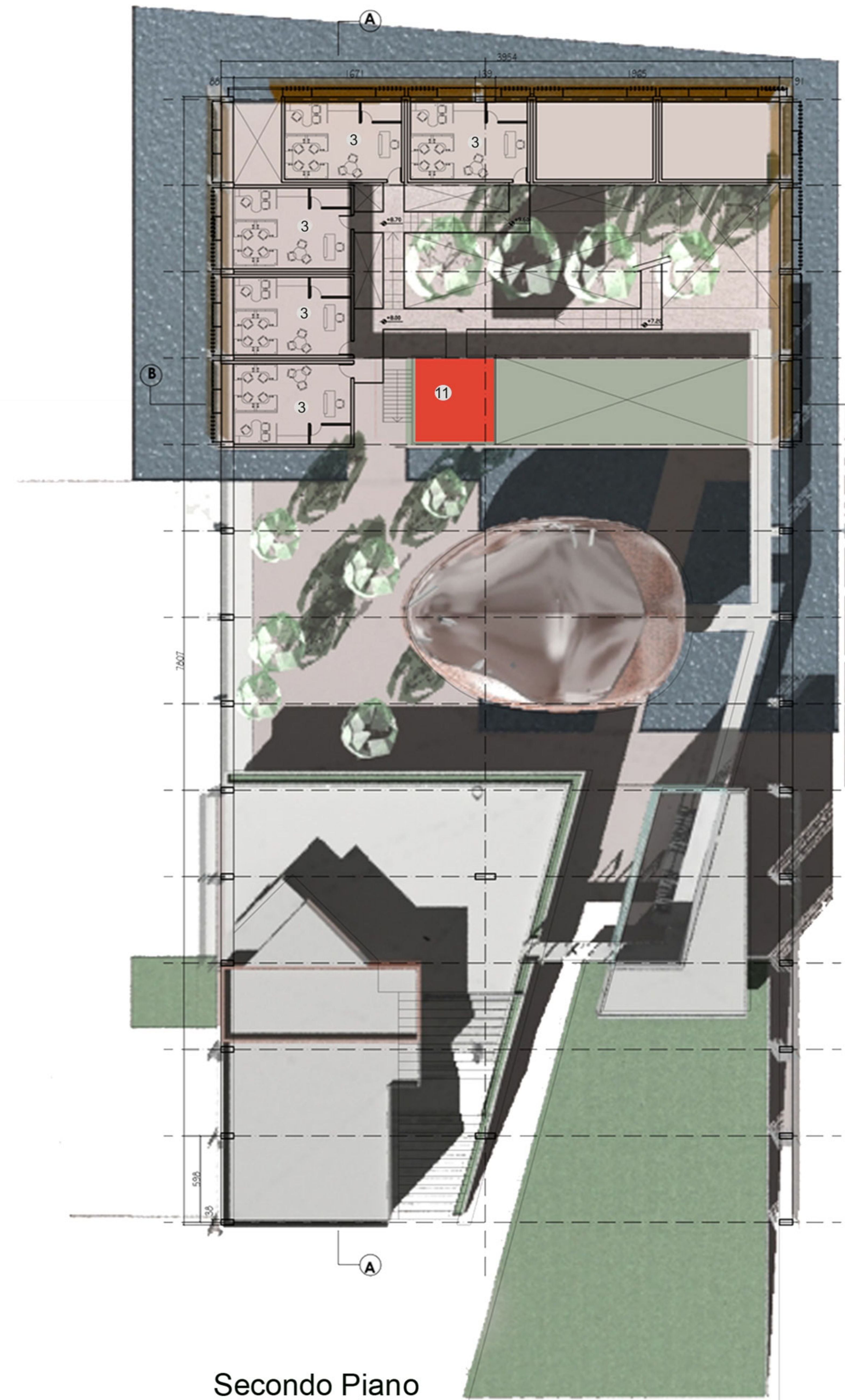


Piano Terra



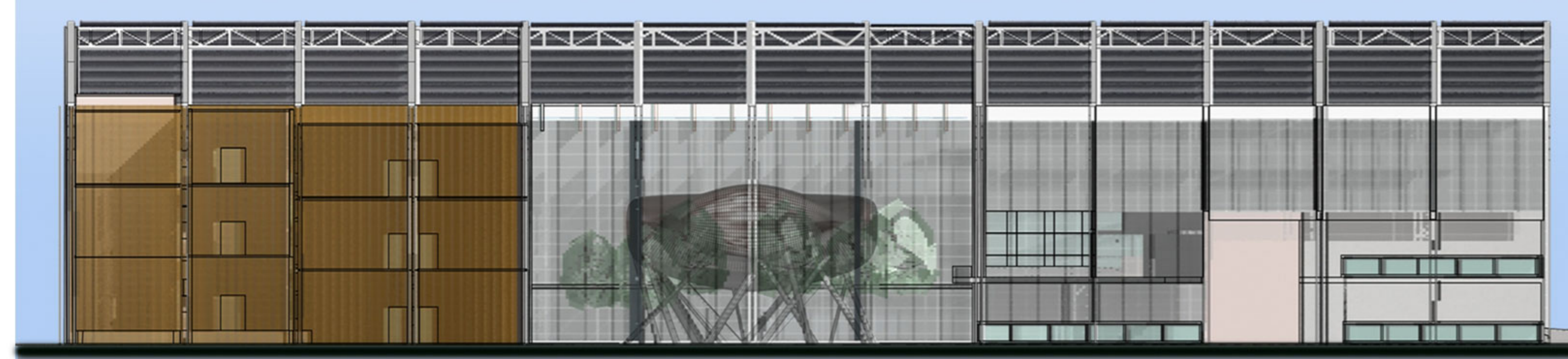
Primo Piano



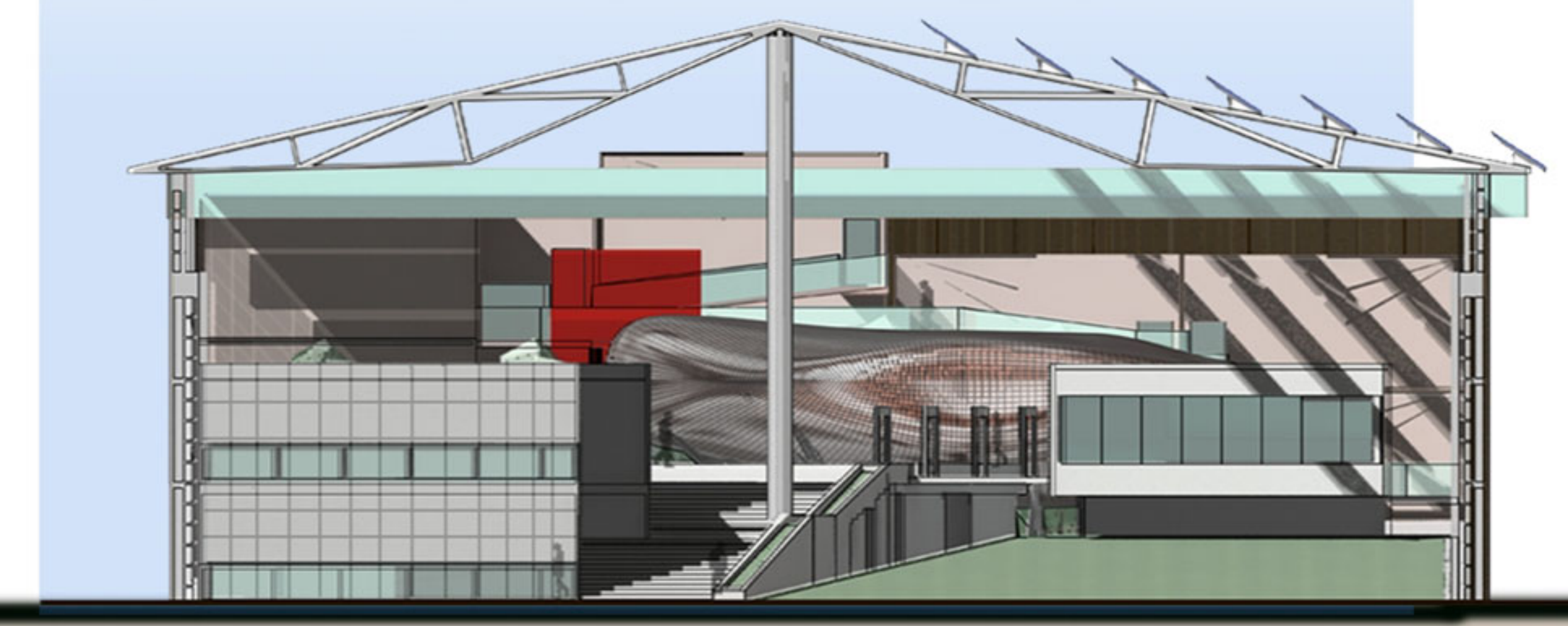
Secondo Piano

Legenda

1	GUEST ROOMS / HOTEL (n. 12)	364 MQ
2	CORTE INTERNA	
3	UFFICI / STUDIO (n. 19)	1155 MQ
4	CONFERENCE ROOM	300 MQ
5	VIP RESTAURANT AND BAR	250 MQ
6	CUCINA	100 MQ
7	RISTORANTE VISITATORI	250 MQ
8	TERRAZZA	250 MQ
9	UFFICI AMMINISTRATIVI	180 MQ
10	PUBLIC AMENITIES	46 MQ
11	CHIEF ADMINISTRATIVE OFFICE	25 MQ



Fronte 1



Fronte 2

Scale 1:250