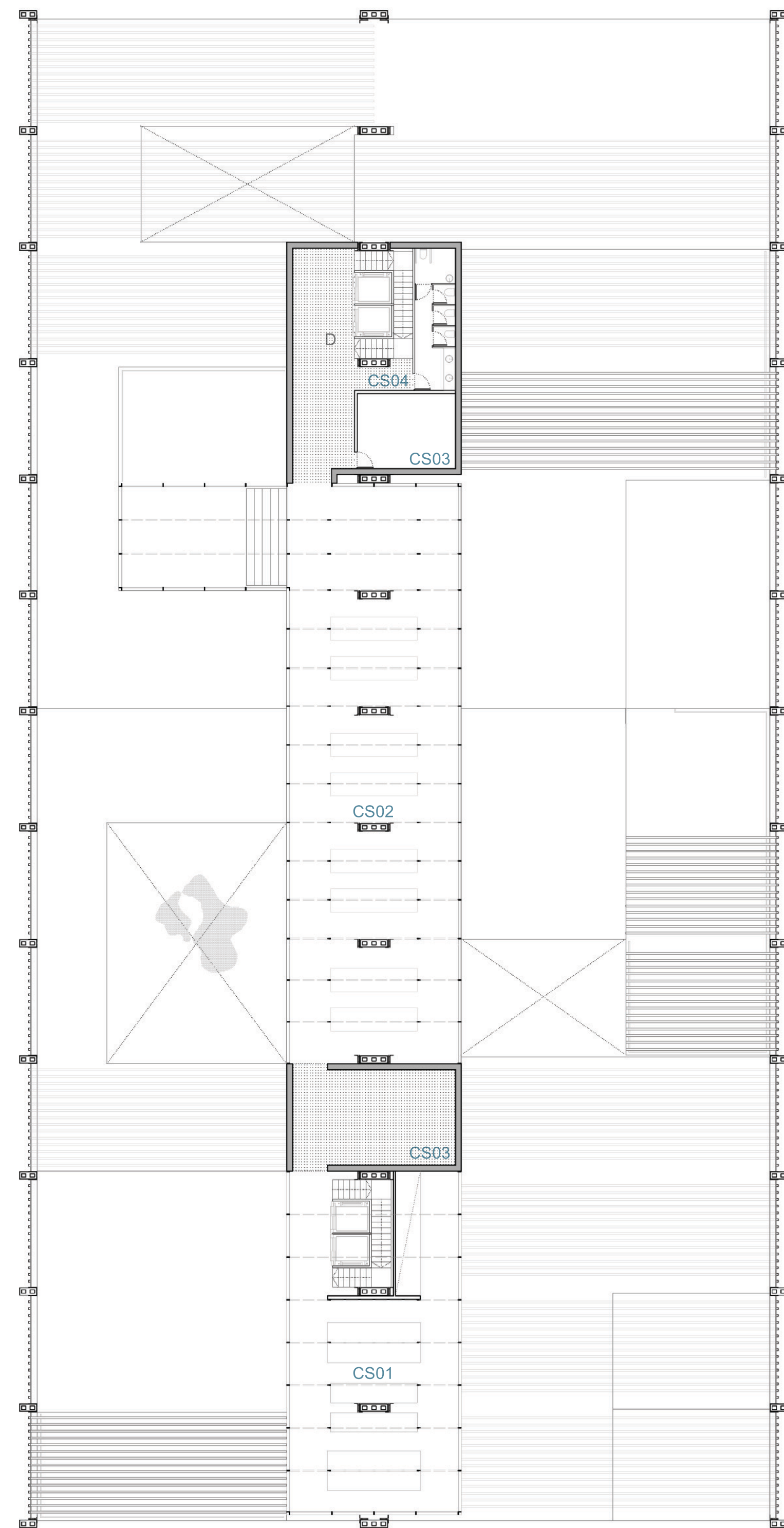
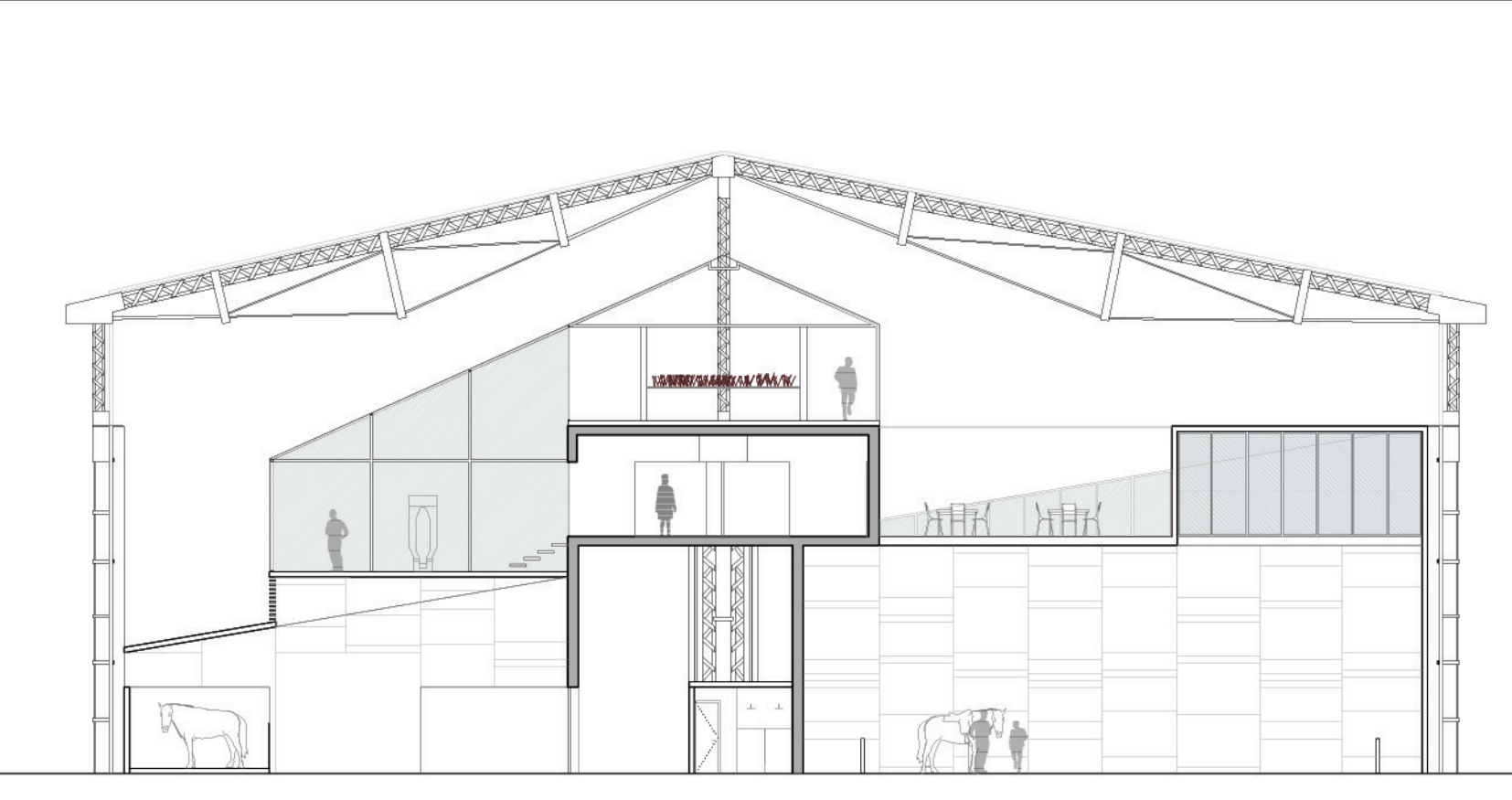
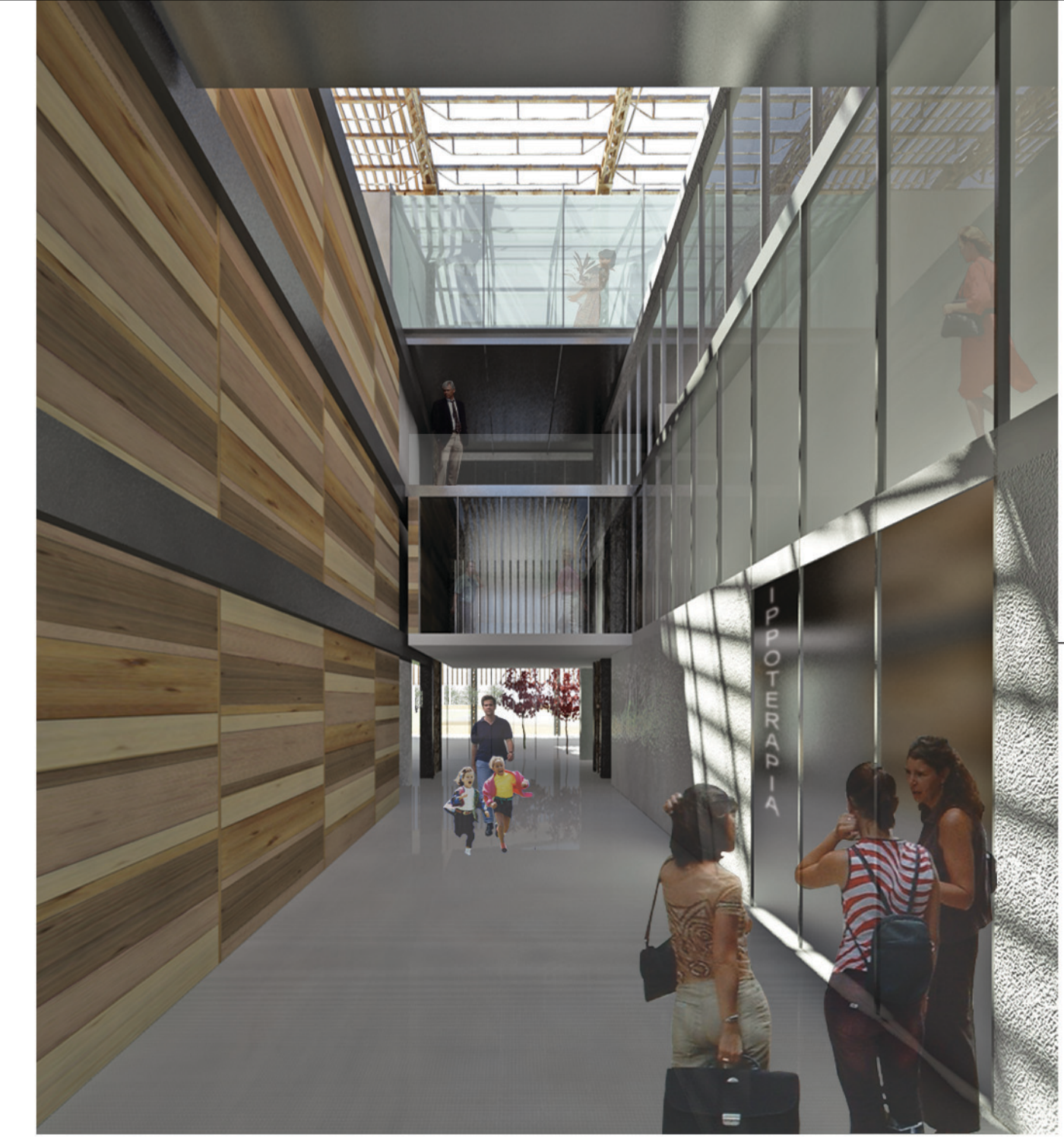
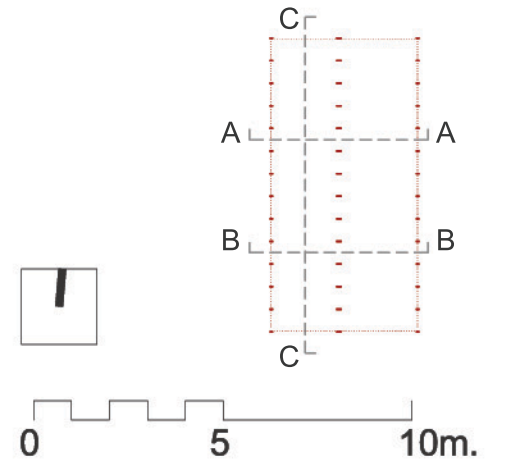


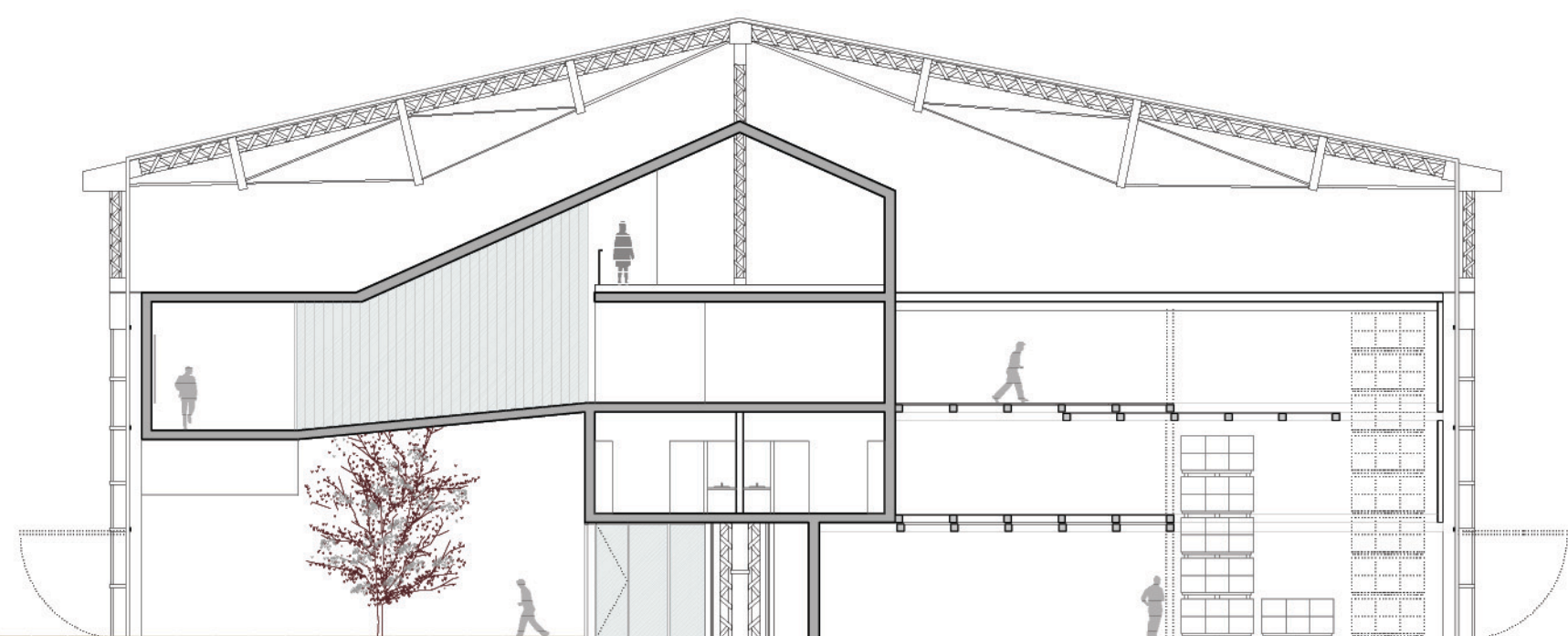
PIANTA 6.85
 ES01_uffici: 155m²
 ES02_laboratori elaborazione prodotti - magazzino: 330m²
 ES03_servizi: 15m²
 S01_percorso espositivo: 230m²
 S02_caffetteria ristorante: 115m²
 S03_spazio espositivo: 300m²
 S04_terrazza, esposizioni open air: 430m²
 S05_servizi: 17m²
 D_distribuzione: 28m²
 SUP. TOTALE: 1.620m²



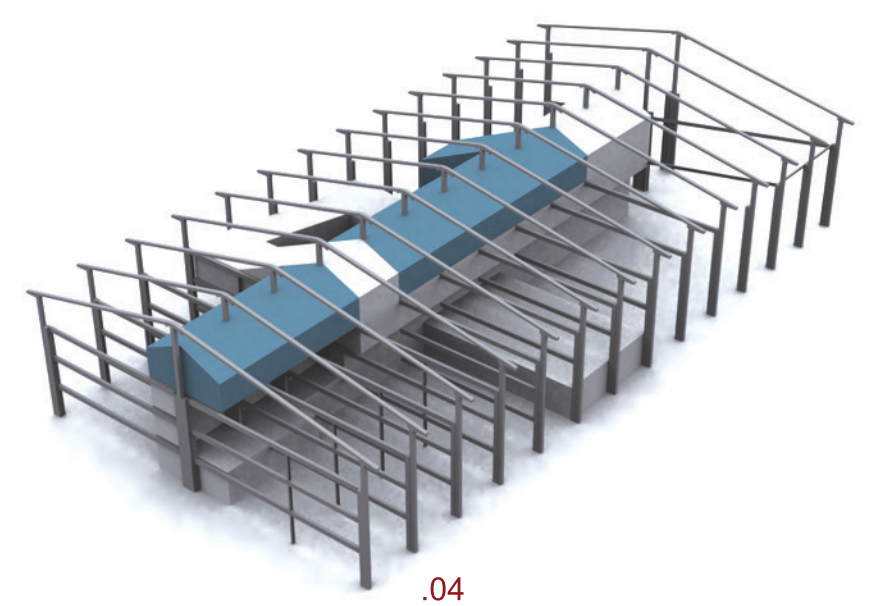
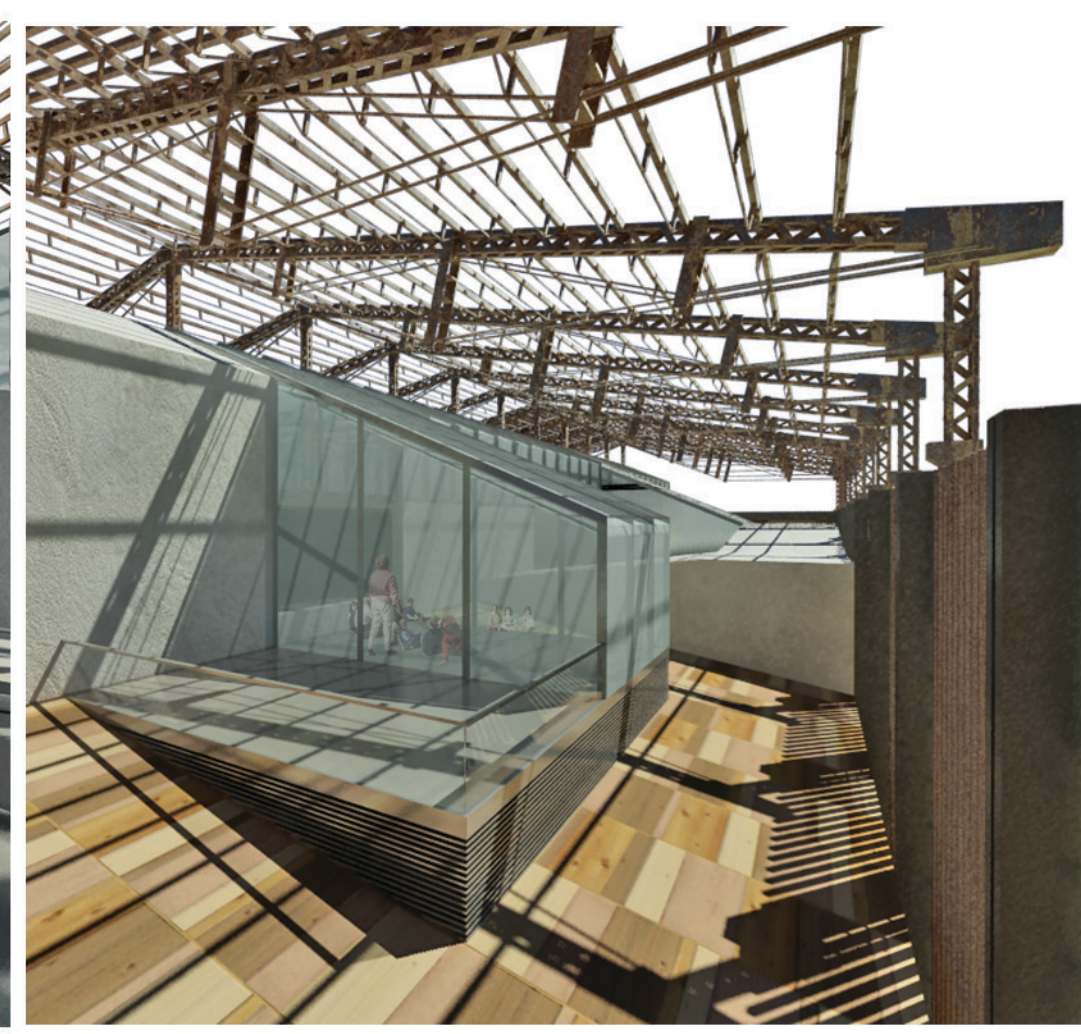
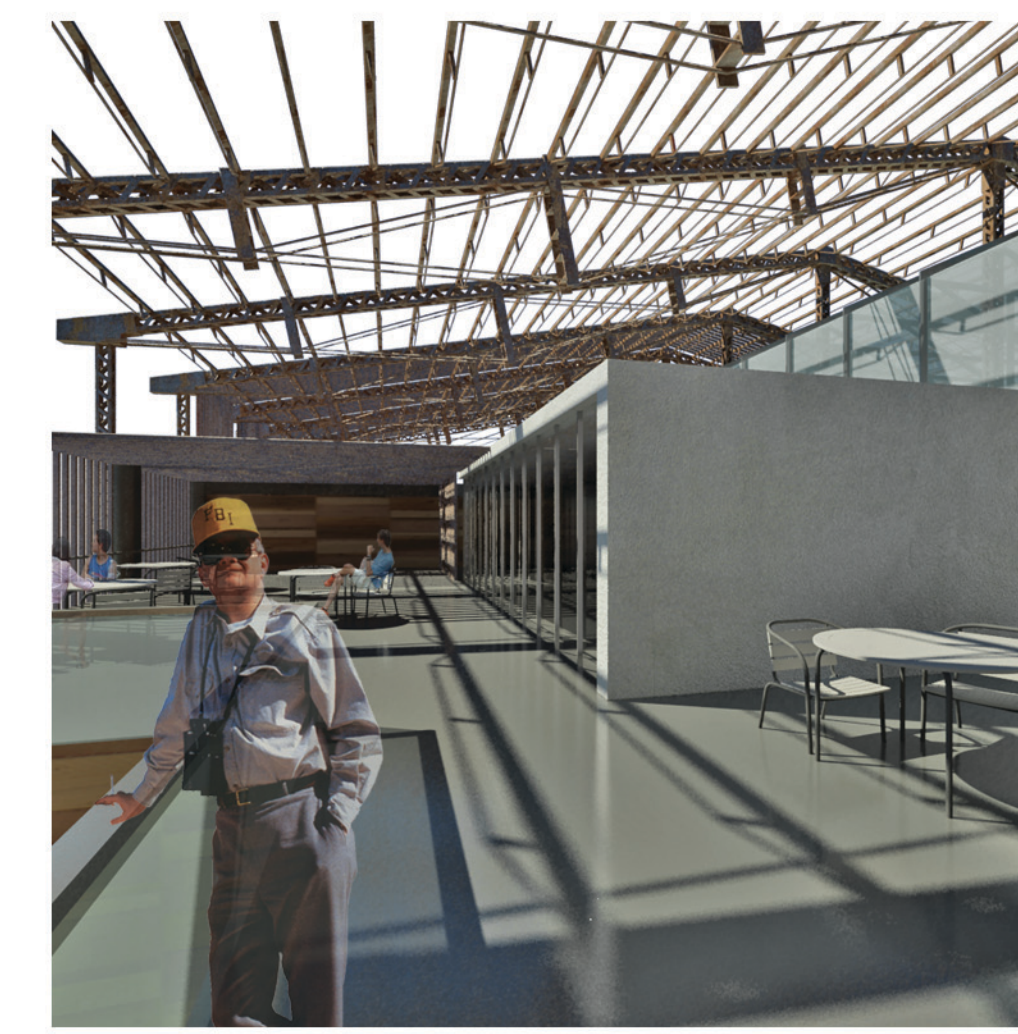
PIANTA 10.05
 CS01_serra a coltura senza suolo (aeronica): 130m²
 CS02_serra a coltura idroponica: 260m²
 CS03_magazzini: 60m²
 CS04_servizi: 15m²
 D_distribuzione: 40m²
 SUP. TOTALE: 505m²



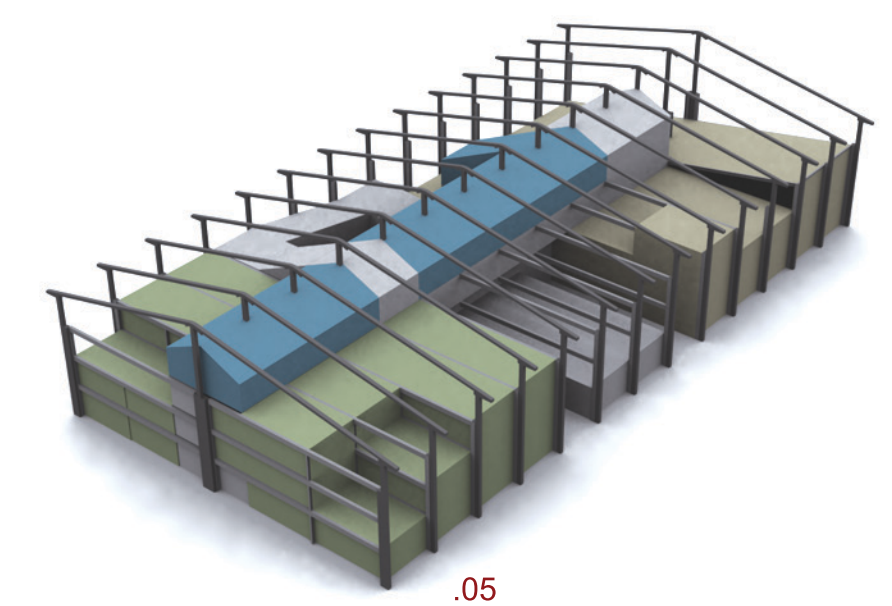
SEZIONE A-A



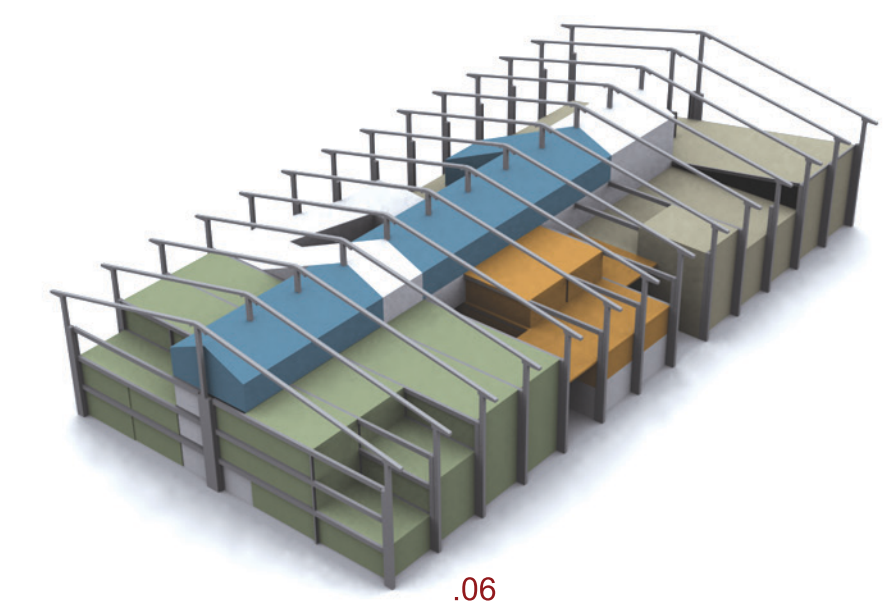
SEZIONE B-B



.04 posizionamento serra sperimentale



.05 solai e tamponamenti a secco (elaborazione-stoccaggio / farm)



.06 solai e tamponamenti a secco (servizi)



SEZIONE C-C